

October 31, 2017

Dear CAFE Chapter President,



As you may have noticed over the last several years, CABE is enjoying *an impressive growth spurt!* We've expanded our services, clients, staff, consultants, partnerships, contracts, grants, resources, online and social media presence—and most importantly, membership. The CABE Membership Team recently met to discuss and enhance how we support and communicate with CABE members, chapters, and regions. We are here to support **YOU** and **all CABE members**, as follows:

Roxanna Espinoza, CABE Membership and Registration Assistant

- performs data entry related to membership
- processes receipts and payments related to chapter/affiliate business.
- assists with general membership inquiries

Joshua Jauregui, CABE Administrative Systems and Membership Relations Manager

- responds to chapter requests for support (i.e. brochures, banners, rebates, membership questions, etc.).
- manages internal database related to the business side of membership.
- sends notices to chapter leaders regarding data and paperwork requirements.

Stanley Lucero, CABE Membership Consultant

Transitions to a new role:

- sets up and staffs the CABE membership and information tables/booths at the annual and regional conferences.
- works with Regional Representatives to recruit members to staff the annual conference booth and supports membership recruitment activities at conference events.
- May also provide musical entertainment (along with local musicians) at conference events.

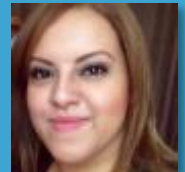
Laurie Nesrala, CABE Education Consultant and Membership Liaison,

Provides regional representatives and chapter/affiliate leaders with membership/chapter support:

- facilitates monthly communication between CABE Chapters/Affiliates and the CABE Board and Staff.
- gathers and disseminates news and updates regarding chapter, affiliate, local, regional, and state events, activities, and accomplishments.
- highlights chapter and membership news in the CABE Corner e-newsletter, on social media, and in other CABE publications.



CABE Membership Team



Roxy Espinoza



Joshua Jauregui



Stanley Lucero



Laurie Nesrala

If you have suggestions, questions or concerns, please feel free to contact the person indicated above for each specific type of membership service. We look forward to working with you to further implement the [CABE Vision and Mission](#). Thank you for being a CABE member and for your service as a chapter leader. What an exciting time to be a part of this wonderful, robust, and ever-growing organization!

Warm regards,

The CABE Membership Team

Thank you for sharing this information with the other officers and leaders of your chapter.

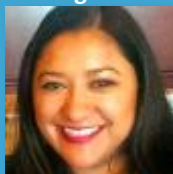
Regional Representatives on the CABE Board of Directors

Region 1



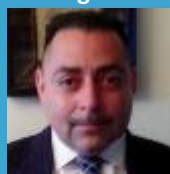
Annie BichLoan

Region 2



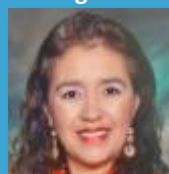
Esabel Cervantes

Region 3



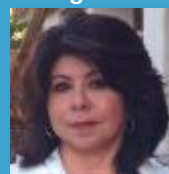
Liberato Figueroa

Region 4



Norma Sandoval

Region 5



Ana Donovan

Vice-President



Annie Rodríguez

CEO



Jan Corea